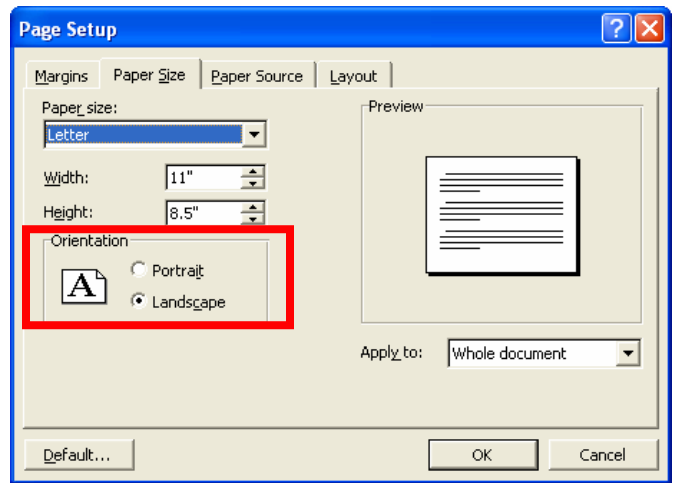
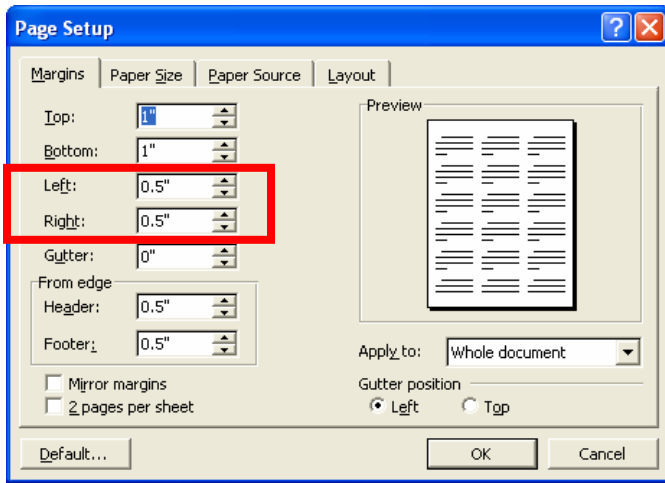


Go to File, scroll down to Page Setup, Margins. Change Left and Right Margins to 0.5 as shown below.

Then, click on the Paper Size tab. Change Orientation from Portrait to Landscape.



Type the information about the disease.

Press Ctrl -A (Control-A) to highlight everything on the page.

Go to Format, Columns, Click on the picture of three columns and click ok. Your brochure will be divided into three equal columns like the page below.



Fold the brochure into thirds.